

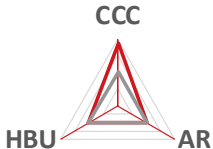
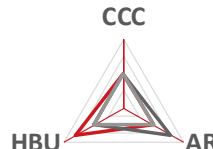
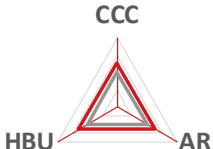
# E2C™ SOLUTIONS FOR OFF-THE-ROAD (OTR) MINING TIRES: **RETREAD APPLICATIONS**

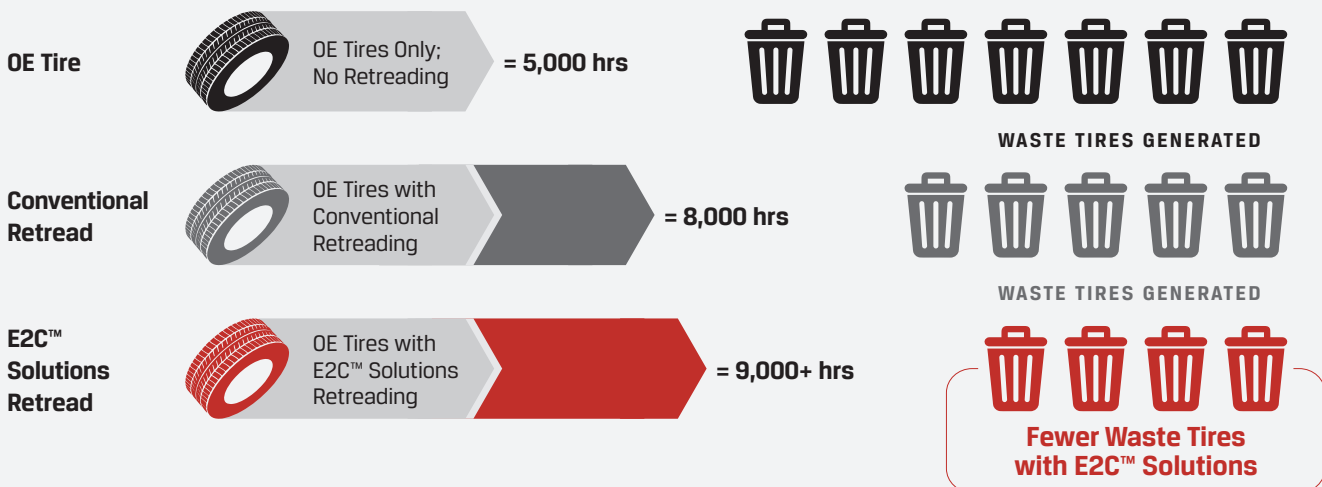


E2C™ solutions can help rubber compounders and retreaders break performance tradeoffs in durability, hysteresis and abrasion resistance, enabling the development of differentiated compounds for premium OTR retread applications. Retreads made with E2C solutions can extend tire life while reducing the number of waste tires generated – a key benefit for mining operators challenged with optimizing their haulage operations for productivity while reducing costs and improving the environmental footprint of their operations.

### Product Overview

Cabot's Engineered Elastomer Composites (E2C™) are premixed solutions that are formulated to deliver high performance in specific applications, eliminating the need for costly and time-consuming evaluation of specific fillers and allowing design times to move straight into final compound optimization. They can be integrated into current production methods without additional capital investment, and require fewer mixing stages, lower mixing temperatures and shorter mixing cycles than conventional products.

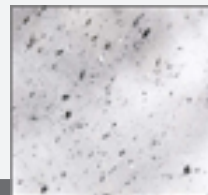
| E2C™ Solutions for OTR Mining Tire Retread Applications |   |  |   |
|---|---|--|---|
|   | E2C DX9730  | E2C DX9640   | E2C FX9390  |
| <b>Key Performance Attributes</b>                       | Extreme durability and high impact failure resistance (CCC)                         | Strong abrasive wear resistance and reduced heat buildup (HBU)                       | Balanced gains in 3 dimensions: CCC, HBU and abrasion resistance (AR)                 |
| <b>Product Benefits</b>                                 | Reduced unplanned downtime, lower catastrophic failure rate, new design envelope    | Longer tire life and/or lower HBU, increased mine throughput or less asset downtime  | Formulation flexibility, performance optimization in multiple directions              |
| <b>Design Space</b>                                     |  |  |  |



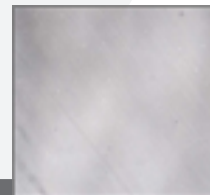
## About E2C™ Solutions

### Superior Performance

E2C™ solutions offer unmatched filler dispersion and step-change improvements in critical material properties. When properly compounded using Cabot's Light Touch™ mixing guidelines, E2C™ solutions enable dramatic improvements in rubber properties such as 20% lower hysteresis, 25% higher reinforcement, delayed crack initiation and 70% slower crack growth.



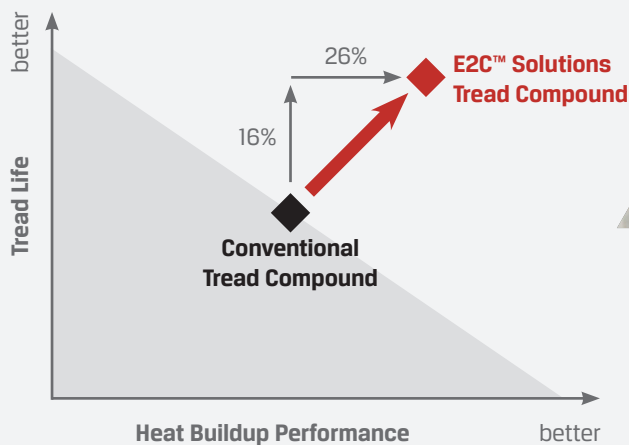
Conventional Compound



vs. E2C™ Solutions

### Field Tested

E2C™ solutions have been proven in the field to improve tread life while increasing heat buildup for better wear and productivity.



To learn more, visit [cabotcorp.com/e2c](http://cabotcorp.com/e2c)

The data and conclusions contained herein are based on work believed to be reliable, however, Cabot cannot and does not guarantee that similar results and/or conclusions will be obtained by others. This information is provided as a convenience and for informational purposes only. No guarantee or warranty as to this information, or any product to which it relates, is given or implied. This information may contain inaccuracies, errors or omissions and CABOT DISCLAIMS ALL WARRANTIES EXPRESS OR IMPLIED, INCLUDING MERCHANTABILITY OR FITNESS FOR A PARTICULAR PURPOSE AS TO (i) SUCH INFORMATION, (ii) ANY PRODUCT OR (iii) INTELLECTUAL PROPERTY INFRINGEMENT. In no event is Cabot responsible for, and Cabot does not accept and hereby disclaims liability for, any damages whatsoever in connection with the use of or reliance on this information or any product to which it relates.

The E2C™ brand is a trademark of Cabot Corporation.



[cabotcorp.com](http://cabotcorp.com)